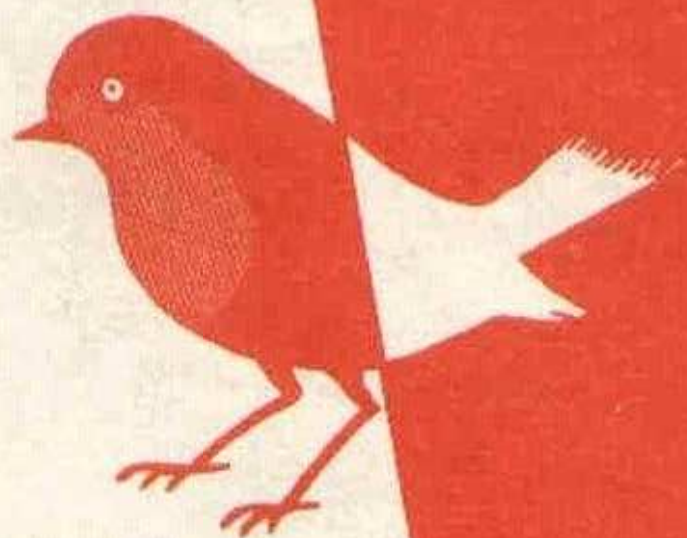


# SWINDON TOWN



# FOOTBALL CLUB

*Official Programme*

**6d.**



# Mills & Merricks Ltd

For over 70 years we have been one of Swindon's leading house furnishers, offering a personal service. You cannot do better than to inspect our showrooms before making your final decision.

Also contractors to

County and Borough Councils

Hospitals

Government Departments

Factories

Schools etc.

Think about it after the game!

We are open until 6 p.m. each evening and 1 p.m. on Wednesdays.

Telephone 5365/6

**16-17 BRIDGE STREET, SWINDON**

**SATURDAY, 14th NOVEMBER, 1964**

**DIVISION TWO**

**SWINDON TOWN**  
**v.**  
**BOLTON WANDERERS**

**Kick-off 3 p.m.**

---

**REFEREE:**

**Mr. K. STOKES (Newark)**

**LINESMEN:**

**Red Flag—Mr. D. M. R. MORGAN (Swansea)**

**Yellow Flag—Mr. H. D. DAVIES (Wenvoe)**

**Wiltshire's most versatile  
Printers**

# **THE BOROUGH PRESS**

**Eastcott Hill, Swindon**

**Telephone 4022**

## **Maylott Studios**

For **GROUP & SPORT** Photographs

Official Photographer to  
Swindon Town Football Club

**31 FARINGDON ROAD**  
TEL. 22792

## **Notton's Cafe**

**COUNTY ROAD**

200 yards from Ground

**RIGHT ON THE BALL**

## **L. Wollen**

OFF LICENCE

**WINES and SPIRITS**

Arkell's Ales and Stout

**373 Cricklade Rd., Swindon**

Deliveries Daily

Phone 3508

## **C. DUNN & SON**

**Builders & Decorators**

Alterations, Renovations,  
Conversions, Plumbers &  
Sanitary Engineers

**503 CRICKLADE RD. Tel. 22522**

## **W. COLLINS (Swindon) LTD.**

**TURF ACCOUNTANTS**

**69 COMMERCIAL ROAD - SWINDON**

**TEL. 21333**

# SWINDON TOWN FOOTBALL COMPANY LIMITED

Registered Office: COUNTY GROUND, SWINDON

## Directors:

Mr. W. J. CASTLE (Chairman)

Mr. H. E. LANE (Vice-Chairman)

Messrs. C. CHANDLER, J.P., J. DAVIES (Treasurer), R. FRICKER, C. J. GREEN,  
F. PLYER, H. WILLIAMS and K. H. WILMER

Manager: B. J. HEAD

Secretary: R. A. MORSE

---

VOL. 15

SATURDAY, NOVEMBER 14th, 1964

No. 10

---

## CLUB NOTES

Again no points gained away from home. Just that little something that eludes us on our efforts in away games. Three have been lost by the odd goal—2-3 at Coventry, 1-2 at Preston and 1-2 at Plymouth.

The last named was most unfortunate, as Swindon scored first, and by far the best goal of the match. The interval score of 1-1 could easily have been 3-1 in our favour had fortune gone our way. Whilst Plymouth probably had the better of the play in the second half there was little or no difference between the two teams on the game as a whole, and yet our opponents are now in 4th position with 20 points, and Swindon occupy 16th place with 15 points. Four points, namely two wins, makes a difference of twelve places. Incidentally we have scored 22 goals at home against Plymouth's tally of 12.

English League Football is unfortunately very much in the news. The number of incidents at games are not only increasing but are of a more serious nature. Such matters can and must be put right. Usually the referee is made the scapegoat and has to carry the blame. This should not be so. The whole affair is in the hands of clubs, the directors and managers, the players

# WILSONS (SWINDON) LTD.

BUILDERS OF MODERN ATTRACTIVE  
HOUSES AND BUNGALOWS

Enquiries to:

HEAD OFFICE: 90 COMMERCIAL ROAD, SWINDON 6361

SITE OFFICE: COVENTRY FARM ESTATE, WROUGHTON 271

SITE OFFICE: COLEVIEW ESTATE, STRATTON S.M. 314

The Rendezvous of all Sportsmen -

## THE CROWN INN

(Host: Frank Plyer)



Arkoll's Best Ales :: Fully Licensed  
Snacks, etc.



Stratton St. Margaret Tel. 2339

Always at your service

## L. BIBBY

For all Types—Rags, Iron and Metal,  
etc. Spot Cash Paid. Please Tel. 2101  
and our van will call.

THE PADDOCK, ERMIN STREET  
STRATTON ST. MARGARET

## WISES CATERING SERVICE

(Reg. Wise)

Our Caterer for the past 16 seasons  
Guarantees

### A GOOD CUP OF TEA AT THE COUNTY GROUND

A full range of Sweets & Cigarettes  
at any of our five kiosks on your  
way in. ENJOY YOURSELF

For Best Quality Wet Fish  
9 a.m. - 6 p.m. (except Mondays)

## YORK ROAD FISHERIES

Frying Mid-day Tuesday, Wednesday,  
Thursday, Friday and Saturday

PHONE 3680

# MARSHGATE GARAGE

Motor Engineers :: Rootes Group Dealers  
STRATTON ROAD - SWINDON - WILTS.

Tel. Swindon 22788

TWO MINUTES FROM GROUND

and the spectators. Each section has its part to play. Clubs should be firm regarding the type of play of the team. There is far too much gamesmanship and time wasting apart from rough play and retaliation and loss of temper (even if it is the heat of the moment).

Clubs can surely demand that their team plays in the proper spirit. Spectators have a right to see football played for the full ninety minutes. Much depends on the players. Everyone enjoys a good hard stirring game, but no one (not even the most ardent supporter) wishes to see a game spoiled by numerous free-kicks.

Then the spectators, who can so easily mar a game by their actions and comments. One enjoys the crowd which gives constant encouragement but not one that boos (especially opposing players) and barracks.

Today we hear of various missiles being thrown at players, referees, and on to the playing pitch; and if only something could be done regarding the present stupid action of throwing toilet rolls, usually at the goalkeeper!

This afternoon we entertain a very young, keen and splendid footballing side. We trust a great game will result, and that our spectators enjoy and applaud good football from both teams. No boos please, and no missiles, not even a cardboard tea carton. Thank you!

Bolton Wanderers has for many years been a famous name in football, and a club with a great tradition. The winner of that memorable first Cup Final at Wembley in 1923. What a great team that was, with so many famous players. What would be their worth in football today? Pym (a great goalkeeper, once

# BRISTOL OMNIBUS CO. LTD.

REGENT CIRCUS, SWINDON

Tel. 22243

For all your travel requirements

- ★ Express Coach Service
- ★ British and Continental Holidays
- ★ Air Travel bookings
- ★ Butlin's Camps and Hotels
- ★ Bus Services in the West

LUXURY COACHES FOR PRIVATE HIRE

Suppliers to the Town —

## *Swindon Sports Centre*

SUPPORTERS SCARVES - RATTLES - Etc.

23 COMMERCIAL ROAD

Tel. 4270

ESTABLISHED 1923

## **DOBELL SHEARMAN & CO. LTD.**

**£10 TYPEWRITERS from £10**

Also full selection new standard and portable typewriters

OFFICE EQUIPMENT

26 High Street & 33 Faringdon Road, Swindon.

Tel. 4961/2



## CLUB NOTES—continued

with Exeter), Haworth and Finney, Nuttall, Seddon and Jennings (all internationals), Butler, Jack, J. R. Smith, Joe Smith, Vizard. Four internationals—Butler, David Jack, later to become a member of the great Arsenal team in the late twenties, Joe Smith, a hard tough, strong inside-left, and well known as a manager for many years of the Blackpool Club in its heyday and finally Ted Vizard, a wonderful ball-playing outside left, who had spells as a manager with Swindon Town (1935), Queen's Park Rangers, and Wolverhampton.

Other great names associated with the club are Nat Lofthouse, the demon centre forward, W. Moir, R. Langton, H. Hassell, and the present goalkeeper Eddie Hopkinson, many times capped for England in recent years. Another England player in the team is Fred Hill, inside forward and schemer of the team, with the Welsh international, Wyn Davies, leading the attack in great form, both for his club and his country.

The remainder of the side are young players, with exception of centre half Bryan Edwards, the oldest member, and Roy Hartle, an experienced right full-back.

Both left wing players, Brian Bromley and Gordon Taylor, are still in their teens, but regarded very highly in football circles.

With two young sides in opposition, a fine display of good football should ensue. We look forward with eager anticipation to a great game. We are sure we shall not be disappointed. Two international goalkeepers are on view today.

If memory serves us right the clubs have only met on one previous occasion, and that was in season 1913-14, just prior to the outbreak of the Great War. Swindon lost at Bolton by 4 goals to 2 in the Second Round of the F.A. Cup.

# OUR VISITORS

## BOLTON WANDERERS

### **HOPKINSON E. (Goalkeeper)**

A former England International who took part in the World Cup series in Sweden. He has toured behind the Iron Curtain with the England "B" Team in 1957 and starred in the Under 23 Internationals.

### **SMITH A. (Goalkeeper)**

Signed from Accrington Stanley in March 1962. 5ft. 9ins. and weighs 10st. 9lbs. Very agile and uses the ball very well and has good anticipation.

### **HARTLE L. R. (Right Full Back)**

Born at Catshill, near Birmingham, he was formerly with Bromsgrove Rovers until moving to Bolton. A reliable defender who has been on the fringe of International honours.

### **FARRIMOND S. (Left Full Back)**

Born at Hindley, near Wigan. Played in local soccer with the Wanderers' Junior teams and then for England Youth before making First Team grade.

### **HATTON D. H. (Half or Full Back)**

A young player who has developed through the Junior teams at Burnden Park and for whom a promising future is predicted. A sound tackler and quick in recovery.

### **COOPER C. (Full Back)**

A local boy from Farnworth who graduated through the Junior teams and signed professional. Had occasional First Team experience.

### **RIMMER W. R. (Left or Right Half Back)**

Born at Birkenhead, he is a former England Schoolboy International who is now a regular member of the Wanderers' League side.

### **EDWARDS G. B. (Centre Half)**

A former Leeds Junior, Bolton signed him in 1947 and has since played at full and half back positions. A good club man and a keen cricketer. Eldest member of the team.

### **LENNARD D. (Half Back)**

Came for trials and graduated through the Junior teams. Height 5ft. 9½ins. and 10st. 1lb. Signed professional in January 1962.

For Quality FLOWERS - FRUIT - VEGETABLES  
FROZEN FOODS - PRE-PACKED FUELS

## **CLARKE'S of Old Swindon**

Proprietors: A. G. G. and J. A. W. HUNT

64 DEVIZES ROAD - SWINDON

Phone 22337

ORDERS DELIVERED DAILY

## **SEA VIEW CAMP**

Camp Road, Wyke Regis, Weymouth.

Tel. 3351

Site overlooks Chesil Beach - Ideal for Camping Parties

Also Moderns Caravans for Hire

## **THE PORK SHOP**

(Swindon Bacon Curing Co. Ltd.)

Specialists in

BACON - PORK - COOKED HAM

50 FLEET STREET - SWINDON

TEL. 22122

Meet your friends for an enjoyable evening at

## **THE KINGSDOWN ARMS**

(Host A. W. Vann)

FULLY LICENSED - ARKELL'S BEERS

SNACKS - Etc.

STRATTON ST. MARGARET

Tel. 3283

## **OUR VISITORS—continued**

### **HULME J. (Centre Half)**

A Cheshire boy from Mobberley who came from School and graduated through the Junior teams. Stands 6ft. and is a strong tackler.

### **REDROBE W. E. (Centre Forward)**

Height 5ft. 11½ins. 13st. 10lbs. Born at Orrell, near Wigan, and graduated through the Junior sides. A strong and robust player who enjoys his football. Has played for the England Youth Team.

### **DAVISON J. H. (Wing Forward)**

Height 5ft. 11ins. and weighs 11st. 11lbs. Signed from Sunderland in 1963. Born Sunderland. Is a fast winger with the ball.

### **LEE F. H. (Outside Right)**

5ft. 7ins. and weighs 11st. 4lbs. Born at Westhoughton, near Bolton. Graduated through the Junior teams and signed professional when reaching the age of 17. One of the youngest professionals to have played in the First Team. A good prospect and played for England Youth Team.

### **DAVIES R. W. (Centre Forward)**

Height 6ft. 0¼ins. Weight 11st. 11lbs. A Welshman, born at Caernarvon and transferred from Wrexham. A strong forceful type of player who has speed and a good shot as well as heading ability.

### **HILL F. (Inside Right)**

Born in Sheffield. He has been capped by England at Full and Under 23 levels. He is the schemer of the Wanderers' attack.

### **BROMLEY B. (Inside Forward)**

A Burnley boy who came from School and joined the Ground Staff. Graduated through the Junior sides and turned professional at 17. He is a skilled ball player and schemer and should make the grade.

### **TAYLOR G. (Inside Forward)**

He also joined the Club as an amateur and graduated through the Junior teams. Height 5ft. 5¼ins. and weight 10st. 9lbs.

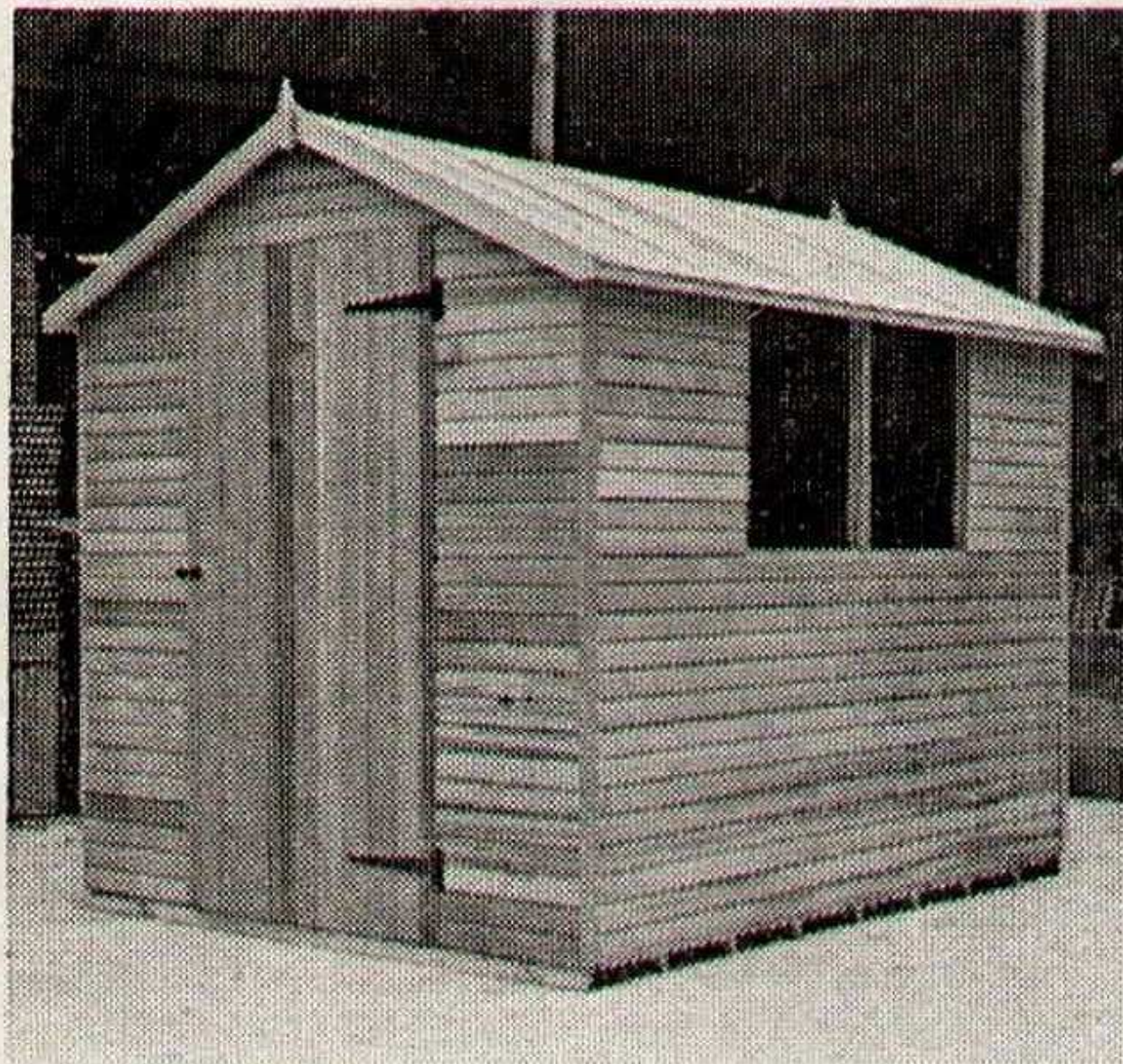
### **RUSSELL W. (Centre Forward)**

Signed from Sheffield United in March 1963. He is a part time professional and a teacher at a Manchester School. Born at Hounslow. Height 5ft. 7¼ins. and weighs 10st.

### **BUTLER D. A. (Wing Forward)**

Joined the Club as an amateur and graduated through the Junior teams. Another local product from Atherton. Height 5ft. 5½ins. and weighs 9st. 6½lbs.

- ★ Cedarwood Sheds
- ★ Workshops and Greenhouses

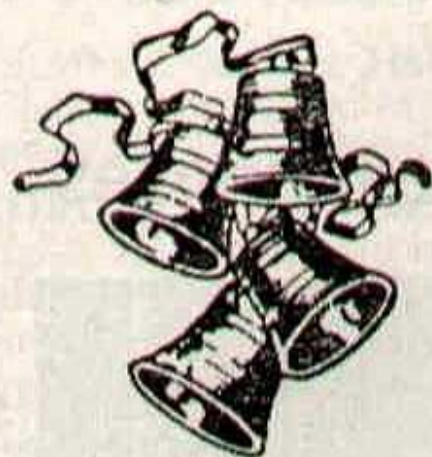


Made locally by

**H. R. SPACKMAN**

SHRIVENHAM ROAD - SWINDON - WILTS.

Telephone Swindon 4458



# W. J. CASTLE

Office and Bakery:  
4 and 5 MARKET STREET

Branch:  
57 BRIDGE STREET  
SWINDON

Telephone 22017

## Specialists —

BIRTHDAY CAKES - WEDDING CAKES  
DAIRY CREAM - PASTRIES  
BUNS - ROLLS - SPONGES

Do not let **CHILBAINS** spoil a good game



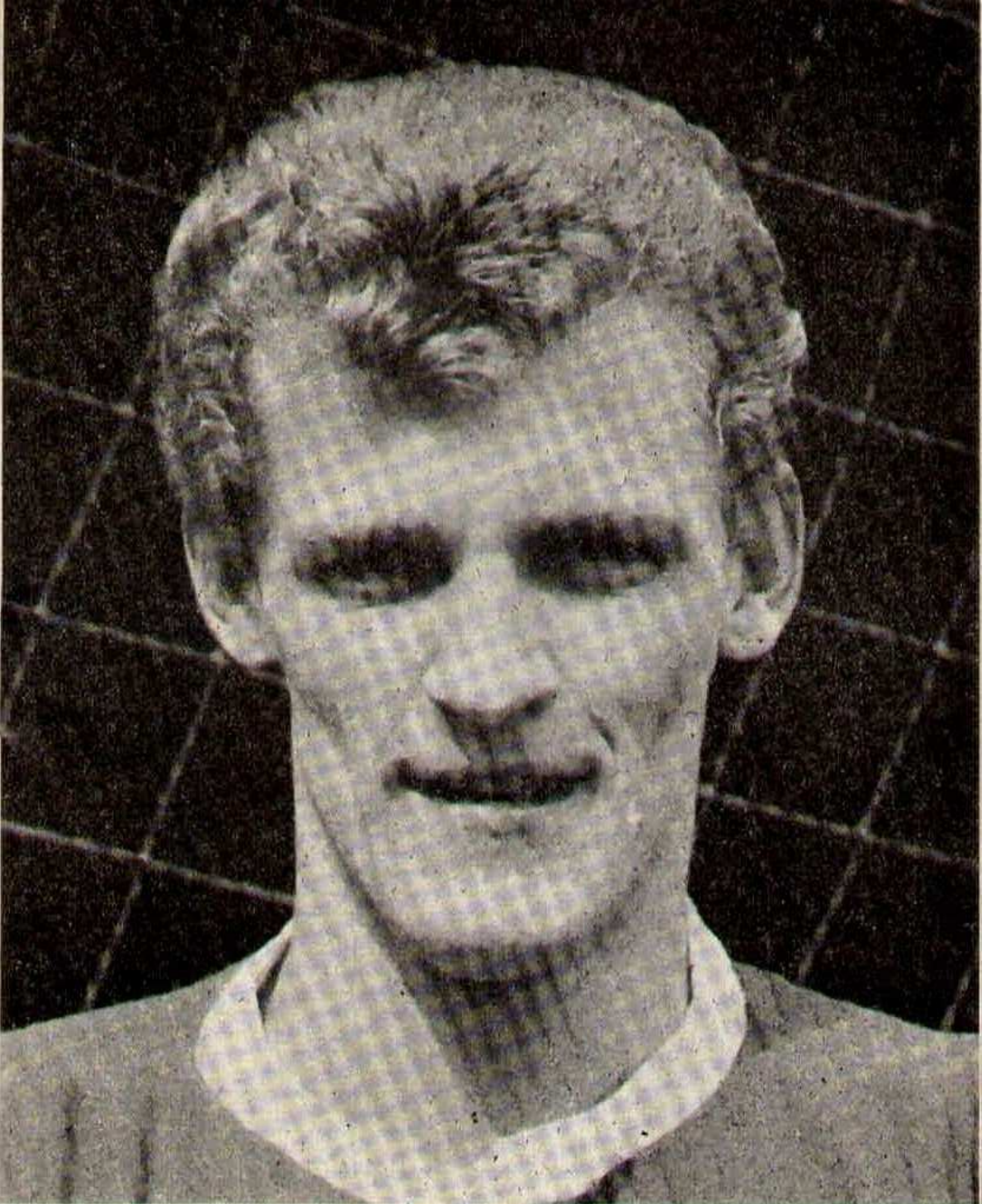
## RELAPERN

Price 2/6 from your CHEMIST

2/10 Post Paid from

**BALLARD & CO. (CHEMISTS) LTD.**

**FARINGDON - BERKS**



JOHN TROLLOPE

# DIVISION II

Date	Opponents	Ground	Result
<b>1964</b>			
August 22	BURY .....	(A)	1-6
25	CRYSTAL PALACE .....	(H)	2-0
29	LEYTON ORIENT .....	(H)	1-0
September 2	CRYSTAL PALACE .....	(A)	1-3
5	CHARLTON ATHLETIC .....	(A)	2-3
8	SWANSEA TOWN .....	(H)	3-0
12	MANCHESTER CITY .....	(H)	0-1
15	SWANSEA TOWN .....	(A)	0-4
19	PORTSMOUTH .....	(A)	0-5
26	HUDDERSFIELD TOWN .....	(H)	4-1
October 3	DERBY COUNTY .....	(H)	4-2
10	COVENTRY CITY .....	(A)	2-3
13	SOUTHAMPTON .....	(H)	2-1
17	CARDIFF CITY .....	(H)	3-3
24	PRESTON NORTH END .....	(A)	1-2
31	IPSWICH TOWN .....	(H)	3-1
November 7	PLYMOUTH ARGYLE .....	(A)	1-2
14	(1) BOLTON WANDERERS .....	(H)	.....
21	MIDDLESBROUGH .....	(A)	.....
28	NEWCASTLE UNITED .....	(H)	.....
December 5	(2) NORTHAMPTON TOWN .....	(A)	.....
12	BURY .....	(H)	.....
19	LEYTON ORIENT .....	(A)	.....
26	NORWCH CITY .....	(H)	.....
28	NORWCH CITY .....	(A)	.....

## 1965

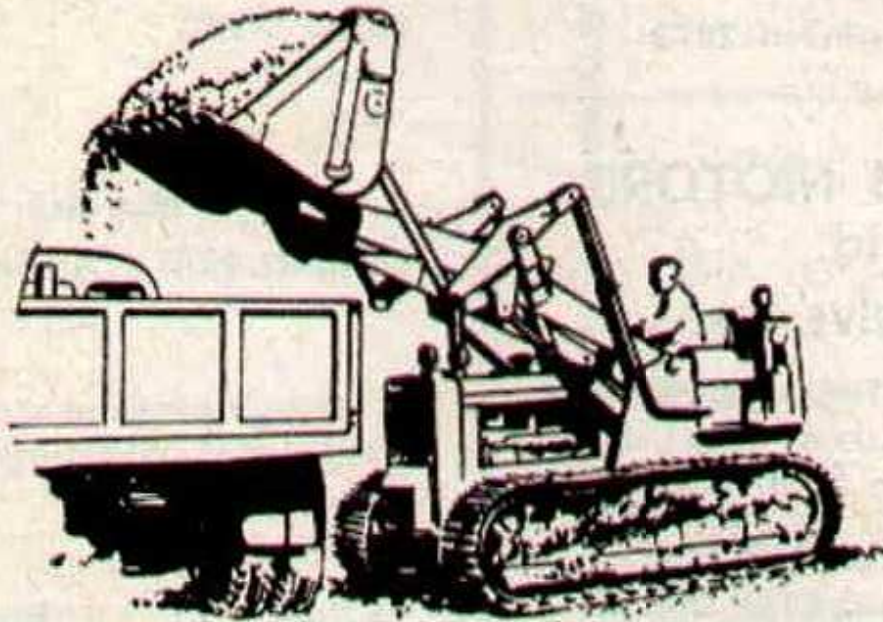
January 2	CHARLTON ATHLETIC .....	(H)	.....
9	(3) .....	.....	.....
16	MANCHESTER CITY .....	(A)	.....
23	PORTSMOUTH .....	(H)	.....
30	(4) .....	.....	.....
February 6	HUDDERSFIELD TOWN .....	(A)	.....
13	DERBY COUNTY .....	(A)	.....
20	(5) COVENTRY CITY .....	(H)	.....
27	CARDIFF CITY .....	(A)	.....
March 6	(6) NORTHAMPTON TOWN .....	(H)	.....
13	IPSWICH TOWN .....	(A)	.....
20	PLYMOUTH ARGYLE .....	(H)	.....
26	(S.F.) BOLTON WANDERERS .....	(A)	.....
April 3	MIDDLESBROUGH .....	(H)	.....
10	NEWCASTLE UNITED .....	(A)	.....
16	ROTHERHAM UNITED .....	(H)	.....
17	PRESTON NORTH END .....	(H)	.....
19	ROTHERHAM UNITED .....	(A)	.....
24	SOUTHAMPTON .....	(A)	.....
May 1	(Final)	.....	.....



# H. HIBBERD LIMITED

40 NEWPORT STREET - SWINDON

PLANT HIRE CONTRACTORS



TRACTORS and SCRAPERS

BULLDOZERS

DROTT SHOVELS

DINKUM DIGGERS

MASSEY-FERGUSON DIGGERS

TELEPHONE: SWINDON 6125

## Hatton's Newsagency

A. J. D. & N. J. Woodhouse

Newsagents :: Tobacconists  
Confectioners

Agents for Wessex School of  
Motoring

Booking Agents for Rimes Coaches

6 Regent Circus (near G.P.O.)

Telephone Swindon 22731

## HULFORD MOTORS Ltd.

### SELF DRIVE HIRE

Fleet of 1964 Fords  
Anglias De-Luxe - Cortinas  
De-Luxe - Zephyr 4s.

### SHRIVENHAM ROAD

(200 yards from Football Ground)

Phone 4934

Large Car Park available

For High Class  
Central Heating, Plumbing  
Painting and Decorating  
Electrical Installations  
and Repairs

## NORTH WILTS Sanitary & Heating Co. Ltd.

NEWPORT ST., SWINDON

Phone 5373/4

## FLOODLIGHTING?

### Warnes Installation

BATHURST CORNER, COUNTY RD.,

Electrical Contractors to the

LET US QUOTE FOR YOUR ELECTRIC

RIGHT WING

SWINDON TOWN

Haffey

Dawson (2)

Troll

Morgan (4)

Hallett (5)

Leggett (7)

Atkins (8)

Summerbee (9)

Swindon Colours:

RED SHIRTS, WHITE SHORTS



Taylor (11)

Bromley (10)

Davies (9)

Hatton (6)

Edwards (5)

Farrimond (3)

Ha

Hopkinson

LEFT WING

BOLTON WANDERERS

## MILLS & MERRICK

For over 70 years we have been one of Swindon  
offering a personal service. You cannot do  
showrooms before making your final decision.  
Also contractors to: County and Borough  
Government Departments - Factories - Schools  
Think about it after the game! We are open until  
1 p.m. on Wednesdays.

16-17 BRIDGE STREET, SWINDON.

# Installations Limited

COUNTY RD., SWINDON. Tel. 27291

Contractors to the "Town"

OUR ELECTRICAL CENTRAL HEATING

SWINDON TOWN

LEFT WING

Haffey

(2) Trollope (3)

Hallett (5) Smart (6)

Summerbee (9) Skeen (10) Rogers (11)

**FOOTBALL  
PINK**

These teams are subject  
to alteration

( ) Davies (9) Hill (8) Lee (7)

Edwards (5) Rimmer (4)

(3) Hartle (2)

Hopkinson

TON WANDERERS

RIGHT WING

# MERRICKS LTD.

One of Swindon's leading house furnishers,  
You cannot do better than to inspect our  
our final decision.

and Borough Councils - Hospitals -  
Factories - Schools, etc.

We are open until 6 p.m. each evening and

SWINDON.

Tel. 5365/6

# McILROYS

## RESTAURANT

for morning coffee,  
luncheon and  
afternoon tea - in  
pleasant surroundings -  
you will find McIlroys  
are top of the  
'league'.

Full table service, best Beers  
and Wines. Parties and  
Functions catered for.

## McIlroys Restaurant

64-72 Regent Street

Tel. 5294



THE ALCOHOL FUEL

## COATE GARAGE

REPAIRS - OVERHAULS - WELDING  
SERVICING - REBORING - TYRES

Props. E. V. & W. H. Mattick

Marlborough Rd., Swindon

## SUPPORTERS' CLUB NOTES

Many supporters will, no doubt, have seen in the local Press, photographs of the young ladies selected as the finalists in the Football Queen Contest for 1964/5.

It is obvious that the judges will have a difficult task in making their final selection.

This will take place during another dance, to be held at Messrs. McIlroy's Ballroom on Wednesday, 9th December (Bar and Raffle).

Dancing will be from 8 p.m. until 1 a.m. The Bands engaged are Gordon Talbot and his Orchestra and "The Soundcasters" (The Bruins).

Admission will be by ticket at 6/- and members of our Committee will have tickets for sale in the near future.

The selection of the Queen with her two "ladies in waiting" will take place at 10 p.m.

We should mention that free transport to all parts of the town has been arranged at 1 a.m.

It is hoped that this event will be well patronised, and we hope that the finalists in the Queen Contest will spend an enjoyable evening.

Tickets for the Christmas Draw, organised by the Football Clubs of the Midlands and the West, are still on sale, and will be available for one more month, as cash and returns have to be in the hands of the Promoters not later than 12th December. These tickets are 2/6 each, and, as previously mentioned, Swindon Town F.C. will participate in the profits, proportionately to the number of tickets which the Club is able to sell.

6d.  
FRIDAYS

# SWINDON ECHO

6d.  
FRIDAYS

**THE PAPER THAT FOLLOWS THE 'TOWN'**

Regular Football Colour Pictures and Reports

Try us for  
Clothes for all  
the family on  
all occasions

## Little & Co. Ltd.

31-32 FLEET STREET

SWINDON

Tel. 22831

We have a  
reputation for  
**Value & Service**  
that is second  
to none

THE POPULAR MEN'S & LADIES' COMPLETE OUTFITTERS

SEE THE LOVELY SELECTION OF  
CHOCOLATES AND SWEETS

Greetings Cards a Speciality

## CECIL GREEN

CONFECTIONER AND TOBACCONIST

13 VICTORIA ROAD

Telephone 4416

The Advertisers in this programme have supported  
the Club. Will you help us reciprocate by supporting  
them whenever possible?

## SUPPORTERS' CLUB NOTES—continued

These, too, may be obtained from members of our Committee and prizes range in value from a new Vauxhall Victor car (to be delivered at the house of the winner on Christmas Day) to items of Christmas fare.

We hope that all who have not yet purchased one of these tickets will do so without delay, as we are anxious to make a success of this undertaking, in common with the other clubs concerned.

Older supporters will feel that there have been wide changes in the set-up and activities of Supporters' Clubs since their formation between the two Wars, when most clubs felt that they had had a successful season if they were able to make donations of hundreds of pounds to their Football Clubs, while donations of four figures were comparatively rare.

Nowadays the social activities play a wider part, and form an important feature of the organisation of Supporters' Clubs.

Entertainment of members of other Clubs is quite normal following matches, although, as is well known, we have been unable to do this to any great extent, owing to inadequate accommodation. It is hoped, however, that this will be remedied in the not too distant future, so that we may be able to reciprocate, on occasions, the hospitality which our members receive when visiting other grounds.

F. J. ROPER  
Devizes Rd.  
Swindon  
Phone 22341

F. J. ROPER  
Cliftonian  
38 William St.  
Swindon  
Phone 3785

*Swindon's*  
*Finest*  
**FISH and CHIPS**

**CALL ON  
YOUR  
WAY  
HOME**

**M e n u**  

---

**PLAICE  
HAKE  
COD  
SKATE**

**WE SHALL BE  
WAITING  
TO  
SERVE YOU**

F. J. ROPER  
High St.  
W'tton Bassett

F. J. ROPER  
Cross Hayes  
Malmesbury

## DIVISION II

	P.	W.	D.	L.	F.	A.	Pts.
Northampton Town .....	17	9	6	2	24	16	24
Newcastle United .....	17	10	3	4	30	18	23
Norwich City .....	17	9	2	6	28	22	20
Plymouth Argyle .....	17	9	2	6	26	26	20
Bolton Wanderers .....	17	9	1	7	43	29	19
Southampton .....	16	8	3	5	31	22	19
Derby County .....	17	9	1	7	42	31	19
Crystal Palace .....	17	9	1	7	24	24	19
Rotherham United .....	17	8	2	7	35	27	18
Middlesbrough .....	17	7	4	6	32	27	18
Manchester City .....	17	8	1	8	32	26	17
Coventry City .....	17	7	3	7	29	28	17
Leyton Orient .....	17	7	3	7	28	35	17
Bury .....	17	6	4	7	27	27	16
Charlton Athletic .....	17	7	2	8	27	30	16
<b>Swindon Town</b> .....	<b>17</b>	<b>7</b>	<b>1</b>	<b>9</b>	<b>30</b>	<b>37</b>	<b>15</b>
Ipswich Town .....	17	4	6	7	33	36	14
Cardiff City .....	16	3	7	6	18	26	13
Swansea Town .....	17	4	4	9	23	32	12
Preston North End .....	17	3	6	8	29	42	12
Huddersfield Town .....	17	4	4	9	17	27	12
Portsmouth .....	17	5	2	10	20	35	12



**Eric**

(E. Ayliffe)

**GENTLEMEN'S HAIRDRESSER**

**57/59 Faringdon Road, Swindon.**

**Phone 4569**

APPOINTMENTS MAY BE BOOKED IN PRIVATE SALON

not just concrete, but . . .

**Premix**



**CLARK BROS. (Swindon) Ltd.**

**Building and Civil Engineering Contractors**

CONSULT US FOR  
BUILDING AND CIVIL ENGINEERING  
CONSTRUCTION IN ALL ITS PHASES

**STRATTON ROAD  
SWINDON**

Telephone  
Swindon 27261

# ADVANCE BOOKINGS

Tickets will be available for individual matches throughout the season. These will be on sale after one match for the following game. Tickets may be purchased at the Ticket Office at the rear of the Old Stand, or by postal application. Applications should be accompanied by a remittance and stamped addressed envelope.

Telephone applications can only be accepted when tickets can be paid for at least three hours before kick-off, i.e. 4.30 p.m. for a mid-week game and 12 noon for a Saturday match.

Ticket prices are as follows:

## New Stand

Block E	6/6
Block D	7/6
Block C	8/6

## Old Stand

Block F	7/6
Blocks G and I	6/- and 8/6
Block H	7/6 and 8/6
Blocks Y and Z	6/6 and 7/6

# BRETTS

PET AND GARDEN SUPPLIES

32-33 Commercial Rd.  
Swindon

6 Cromwell St.  
Swindon

# HOLMES & LUCAS

For a complete range of the very latest in radio,  
television and all domestic appliances

Home demonstrations.      Top Part Exchanges

**HOLMES & LUCAS, 14 Regent Street      Tel. 22526 & 4721**

FOR ALL YOUR ANGLING NEEDS  
CONSULT

## FRANK WOODWARD

Swindon's Fishing Tackle Specialist

**25 HAVELOCK ST., SWINDON**  
PHONE 3879

For Paints of Good Quality

## H. S. HODGES & SONS (SWINDON) LTD.

**CRICKLADE RD., SWINDON**  
PHONE 22422

Dulux, Brolac, Valspar, Wallcharm,  
etc.

## SOUTHERN LAUNDRY Co. Ltd.

Launderers and Dry Cleaners

**HAYDON ST. - SWINDON**  
TELEPHONE 4161

## COMLEY'S

Modern Music Centre

**26 HAVELOCK ST., SWINDON**

RECORDS - MUSIC - INSTRUMENTS

Top Twenty 'Pops' always in stock  
and wide selection of Jazz & Classics

Personal Supervision      Phone 3874

# **FORTHCOMING MATCHES**

**SATURDAY, NOVEMBER 21st, 1964**

**FOOTBALL COMBINATION**

## **BRIGHTON & H.A.**

**Kick-off 3 p.m.**

---

**SATURDAY, NOVEMBER 28th, 1964**

**DIVISION II**

## **NEWCASTLE UTD.**

**Kick-off 3 p.m.**

---

**SATURDAY, DECEMBER 5th, 1964**

**FOOTBALL COMBINATION**

## **SOUTHEND UTD.**

**Kick-off 3 p.m.**

**EDWIN H. BRADLEY  
& SONS LTD.  
OKUS - SWINDON**



HOUSING ESTATES UNDER  
DEVELOPMENT IN  
SWINDON, SHRIVENHAM,  
CHIPPENHAM & TROWBRIDGE



Full particulars from our Estate Office:  
**74 VICTORIA ROAD - SWINDON**

Telephone No. 5865

# KEY OF THE BOARD

## FIRST SECTION

- A—Arsenal v. West Ham
- B—Aston Villa v. Stoke C.
- C—Blackburn v. West Bromwich A.
- D—Blackpool v. Manchester Utd.
- E—Chelsea v. Everton
- F—Leeds v. Birmingham
- G—Leicester v. Sheffield Utd.
- H—Liverpool v. Notts F.
- I—Sheffield Wed. v. Fulham
- J—Sunderland v. Burnley
- K—Wolves v. Tottenham
- L—Charlton v. Preston
- M—Crystal Palace v. Huddersfield
- N—Derby v. Middlesbrough
- O—Leyton Orient v. Cardiff City
- P—Manchester City v. Ipswich
- Q—Norwich v. Southampton
- R—Portsmouth v. Plymouth
- S—Rotherham v. Northampton
- T—Bournemouth v. Gravesend

## SECOND SECTION

- A—Bristol City v. Brighton
- B—Colchester v. Bideford
- C—Luton Tn. v. Southend
- D—Millwall v. Kettering
- E—Notts County v. Chelmsford
- F—Oxford v. Mansfield
- G—Peterborough v. Salisbury
- H—Port Vale v. Hendon
- I—Q.P.R. v. Bath City
- J—Reading v. Watford
- K—Walsall v. Bristol Rovers
- L—Canterbury v. Torquay
- M—Crook v. Carlisle
- N—Dartford v. Aldershot
- O—Exeter v. Hayes
- P—Kings Lynn v. Shrewsbury
- Q—Kidderminster v. Hull
- R—Newport County v. Spalding
- S—Walton R. v. Weymouth
- T—Wisbech v. Brentford

# **T. QUALITY (Swindon) LTD.**

Wholesale Fish, Fruit, Vegetable and Potato Merchant

**HOLBROOK STREET - SWINDON**

Telephone Swindon 5446/7

# **G. A. STREETLY**

Tobacconist and Confectioner

**10 BOURNE ROAD - MOREDON - SWINDON**

Telephone: 4956

# **J. WILMER**

St. Margaret's Road  
Swindon

TELEPHONE 22535

"COAL!"  
"COAL!"  
"COAL!"

# **LEESE, ING & CO. LTD.**

Mineral Water and Squash Manufacturers

**LANSDOWN ROAD - SWINDON**

TELEPHONE 22744

# **BINGO**

**AT HALF-TIME TODAY**

**£100 PRIZE**

also

**TWO LUCKY NUMBERS MONDAY TO FRIDAY**

**£10 PRIZE FOR EACH NUMBER**

---

All numbers published daily in  
"Daily Sketch"      "Evening Advertiser"

---

**Tickets for the  
NEW DEVELOPMENT COMPETITION  
ARE NOW ON SALE  
PRICE 1/-**



Suppliers to the Swindon Team and  
Manager (Mr. Head) of FORD CARS

**MAY WE SUPPLY YOU?**



**EARLE**

of Chippenham Limited

MAIN



DEALERS

**COCKLEBURY ROAD - CHIPPENHAM**

**Telephone 3255**

*always on the ball*

# THE MIDLAND-WEST LANDSCAPE CO LTD

(formerly E. A. Roberts)

**WESTBURY, BRACKLEY, NORTHANTS. Finmere 392**

**16 HIGH STREET, BRACKLEY. 3324**

**88 HIGH STREET, PURTON. 544**

**Agency:**

**JOHNSONS FRUIT SHOP, 30 HIGH STREET, WINCANTON 3383**

- Complete Design and Landscape: Hotels, Factories, Bowling Green, and all Playing Fields maintained.
- Plants, Roses, Shrubs, Trees, Peat, supplied in season.
- Good quality turf always available.
- Fencing of all kinds supplied and erected.
- Cotswold stone walls, Coloured Paving and Terraces our speciality.
- Contractors to County Councils.
- All work guaranteed
- ESTIMATES FREE

**BRITAIN'S FASTEST GROWING  
TRADE UNION**

***ASSET***

(Association of Supervisory Staffs, Executives & Technicians)

**Specialises exclusively in the problems of  
Supervisors, Executives and Technicians**

Full particulars:

**INDUSTRIAL OFFICER, 24 BRUNSWICK SQUARE, GLOUCESTER**

**Telephone: Gloucester 27633**

2 = 3  
6 7/2  
12

**Gates from £3**  
Singles and Doubles

If you live in the Swindon area  
we will measure your gateway  
for you

**Manufacturers of tip-up stadium  
seating**

Send for free catalogue  
**MARTYN LYN SHAW LIMITED**  
20 Boundary Works  
Stratton Road SWINDON 4177

